



GAMES OF THE SMALL STATES OF EUROPE

Expression of Interest
for the installation of temporary passive
network equipment at 13 sites for the
Games of the Small States of Europe 2023

29th May 2023 – 3rd June 2023

EOI: Ref MOC Malta 2023/09

This document, can either be downloaded from the Maltese Olympic Committee Webiste or collected free of charge from the Maltese Olympic Committee Headquarters at the National Pool Complex or sent to you via e-mail upon a formal request sent to info@gssemalta2023.mt

For any clarifications, please contact the Maltese Olympic Committee via email on info@gssemalta2023.mt
Offers, together with supporting documentation, must be sent via e-mail to info@gssemalta2023.mt by
Monday 8th May 2023



1. Scope

Malta shall be organizing the Games of the Small States of Europe between Monday 29th of May and Saturday 3rd of June 2023, which event shall be organized by the Maltese Olympic Committee. For this event, the participation of approximately two thousand (2000) athletes, officials and volunteers is forecasted.

2. Timetable

	DATE	TIME
Date of Issue of this Expression	01/05/2023	
Deadline for request for any additional information from the Maltese Olympic Committee (MOC):	08/05/2023	11.00am
Last date on which additional information can be issued by the Maltese Olympic Committee (MOC)	05/05/2023	11.00am
Deadline for Submission of Offers (unless otherwise modified in terms of Clause 10.1 of the General Rules Governing Tendering)	08/05/2023	11.00am
Offer Opening Session (unless otherwise modified in terms of Clause 10.1 of the General Rules Governing Tendering)	08/05/2023	12.00am
* All times Central European Time (CET)		

3. Locations General Brief

The installations are to be done in 13 different venues and plans can be found in Annex III of this document. Contracting Authority should not be charged extra should a venue be changed.

1. National Swimming Pool Complex – Swimming & Media Centre
2. University Sports Hall – Table Tennis
3. National Sports School – Judo
4. Gillieru – Sailing



5. Ta' Qali Basketball Pavilion – Basketball and 3v3
6. Tony Bezzina Stadium – Rugby
7. Ta' Kandia Shooting Ranges – Clay Shooting
8. Kirkop Sports Complex – Indoor Shooting
9. Marsa Athletics Matthew Micallef St. John Stadium – Athletics
10. Marsa Sports Club – Squash and Tennis
11. Cottonera Sports Complex – Squash
12. Media Centre – Marsa Sports Complex
13. Opening & Closing Ceremony Site

(Most plans are included except for the opening and closing ceremony and sailing facility)

3. Clarification

Any clarifications can be done via emails on info@gssemalta2023.mt and these will be uploaded on the Maltese Olympic Committee website.

4. Procedure to be applied

The local organizing committee will ask all interested economic operators to submit a quote as outlined in Annex II indicating the price per unit and the total cost excluding VAT.

All prices must include all relevant costs including but not limited to labour, transport, any necessary permits, etc.

MOC shall retain the right to change / cancel / increase /reduce the quantities outlined. Quantities listed are approximate.

The Maltese Olympic Committee reserves the right to alter and/or cancel this call should the need arise and shall not in any way, be held accountable and liable for any costs and or damages incurred by those submitting their offers.

On site meetings can be held with the selected economic operator following signing of contract.



5. Selection and Award

The LOC together with the Maltese Olympic Committee reserves the right to refuse offers from those economic operators who do not meet the standards and criteria expected.

Final selection will be made by the MOC according to the details received from the bidders and will be taking into consideration the quality and pricing.

This expression of interest has no lots but one bidder will be selected.

MOC reserves the right to enter into agreement in full or in part, and this contract is not exclusive for all the participants of this event.

6. Submission

Submissions in respect to this Expression of Interest should include the attached form Annex 1 and Annex II.

Specifications for each item in Annex 2 are to be sent accompanied with photos.

All submissions should be sent via e-mail to info@gssemalta2023.mt

Late submissions will not be considered.



Annex 1

Expression of Interest for the installation of temporary passive network equipment at 13 sites for the Games of the Small States of Europe 2023 29th May 2023 – 3rd June 2023

1	Name of Economic Operator/Company	
2	Name of Key Contact person	
3	Address	
4	E-Mail	
5	Tel. No.	
6	Mobile No.	
7	Name of Signatory	
8	Signature	
9	Date	



Annex II

GSSE Passive BOQ			
Description	Qty	Price (exc VAT)	Total (exc VAT)
Cable Cat 6: Supply and Install (1m) - Conductor quality 23AWG or better - Conductor type Solid bare copper	3750		
Copper termination, testing, installation and labelling: for Media Areas - Termination in trucking including sockets, faceplates and brackets (complete) - Termination at cabinet side: to use Patch Panel. - MUST be labelled at both ends	60		
Copper termination, testing and labelling: for APs and Backbones - Termination in RJ45 at both ends - MUST be labelled at both ends	45		
Patch panel for media centre	4		
Testing of MM fibre (pair)	2		
Optional - Termination of MM fibre LC (pair at both ends)	2		
Testing of existing Copper and label	5		
Patch Lead 20m - CAT 6 Solid bare copper	50		
Patch Lead 10m - CAT 6 Solid bare copper	80		
Patch Lead 5m - CAT 6 Solid bare copper	80		
Patch Lead 3m - CAT 6 Solid bare copper	80		
Patch Lead 0.5m - CAT 6 Solid bare copper	60		
RJ45 couplers	20		
Cat 6 copper cable box (305m) (for MITA use)	2		
RJ45 plugs for Cat6 (packet of 10) (for MITA use)	3		
Cable ties 30 cm black (pack of 100) (for MITA use)	7		
Duct tape (for MITA use)	7		
Cable management were required to secure the temporarily cable laying (lump)	1		
Supply and install Trucking 50 x 100 on media centre tables (1m)	30		
UPS 1K Lease	4		
Cabinet Lease minimum 12U height - delivery on site where required	6		
Dismantling and reconnect everything after event (lump)	1		
To assist us as required 30hrs	1		



Granaries requirements - Att. To be charged according to material usage			
Cable Cat 6: Supply and Install (1m) - Conductor quality 23AWG or better - Conductor type Solid bare copper	1000		
Copper termination, testing and labelling: for APs and Backbones - Termination in RJ45 at both ends - MUST be labelled at both ends	30		
Patch Lead 20m - CAT 6 Solid bare copper	20		
Patch Lead 10m - CAT 6 Solid bare copper	20		
Patch Lead 5m - CAT 6 Solid bare copper	20		
Cable ties 30 cm black (pack of 100) (for MITA use)	3		
Duct tape (for MITA use)	3		
Cable management were required to secure the temporarily cable laying (lump)	1		
UPS 1K Lease	3		
Cabinet Lease minimum 12U height - delivery on site where required	3		
Dismantling and reconnect everything after event (lump)	1		
	Total (exc VAT)		



Annex III - PLANS

MAIN - National Pool – Swimming & Table tennis (1)



Fibre point – to confirm with GO

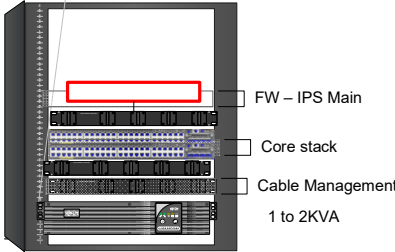


To install a Cabinet



Access Point Omni

Cab A
Pixxina Main



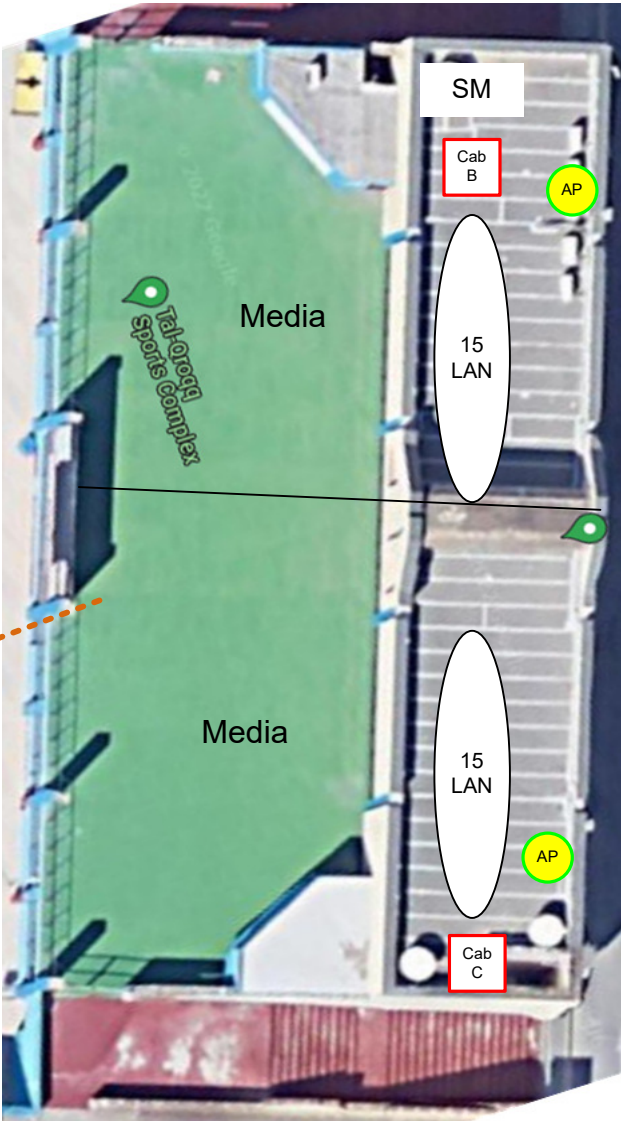
BB fibre
BB Copper

Contractor

- To supply trucking on media tables and terminate 15 points from Cab B
- To supply trucking on media tables and terminate 15 points from Cab C
- To lease Cab B and Cab C
- To lay BB from Cab B to Cab C (copper)
- Cab D – to lay 3 copper cables for APs (2 external & 1 Internal) apx 30m
- 5 x 20m Patch leads
- 5 x 10m Patch leads
- 10 x 5m Patch leads
- 30 x 3m Patch leads
- 30 x 0.5m Patch leads (if termination is through PP)
- To provide / lay power to switches if not available
- Cable management where required
- To decommission after event



Main Connection
MITA monitoring



PL 15 x 3m & 0.5m
PL 1 x 20m
LAN socket 15 x 25m

PL 1 x 10m
PL 15 x 3m & 0.5m
LAN socket 15 x 25m

Marsa Sports Club – Tennis & Squash (2)

GO Contact – Dorian



Contractor

- To Test MM fibre to Cross-patch
- To Test MM fibre to Cab B
- (Optional) Terminate MM fibre 1 pair on both cables if required.
- To identify / Test / terminate, 2 copper cable from main to Cab A
- Cab A – to lay 5 copper cables for APs (2 external & 3 Internal)
- 4 APs around 40m + 1 AP around 100m
- Cab B – To lay 2 copper cables for Media area (around 40m)
- 10 x 20m Patch leads
- 10 x 10m Patch leads
- 5 x 5m Patch leads
- To provide / lay power to switches if not available
- Cable management where required
- To decommission after event

Marsa Track – Media (3)

— BB fibre - GO
— BB Copper



Contractor

- To supply trucking on media tables and terminate 15 points from Cab A
- To supply trucking on media tables and terminate 15 points from Cab B
- To lease Cab A and Cab B
- To lay BB from Cab A to Cab B (copper) 50m
- 2 x 20m Patch leads
- 2 x 10m Patch leads
- 5 x 5m Patch leads
- 30 x 3m Patch leads
- 30 x 0.5m Patch leads (if termination is through PP)
- To provide / lay power to switches if not available
- Cable management where required
- To decommission after event

Marsa Track – Athlete (4)



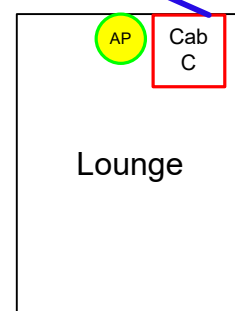
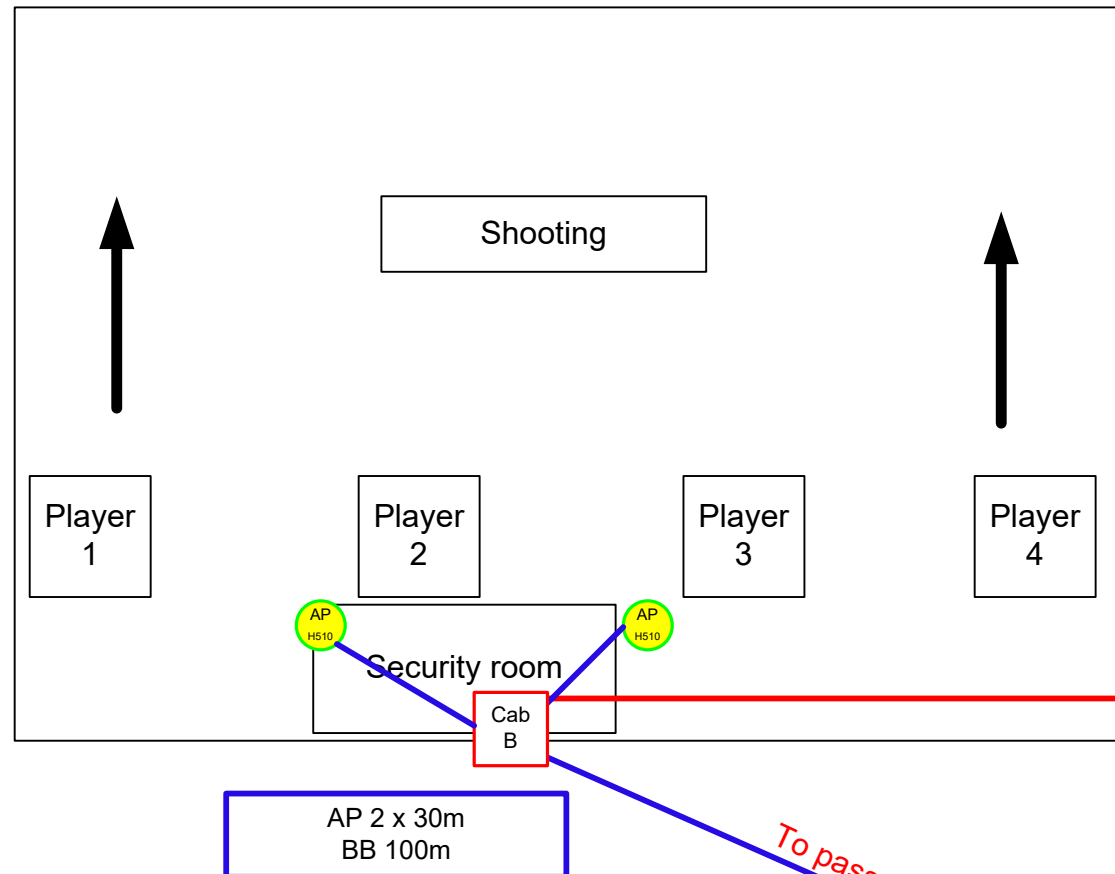
BB fibre - GO

BB Copper

Contractor:

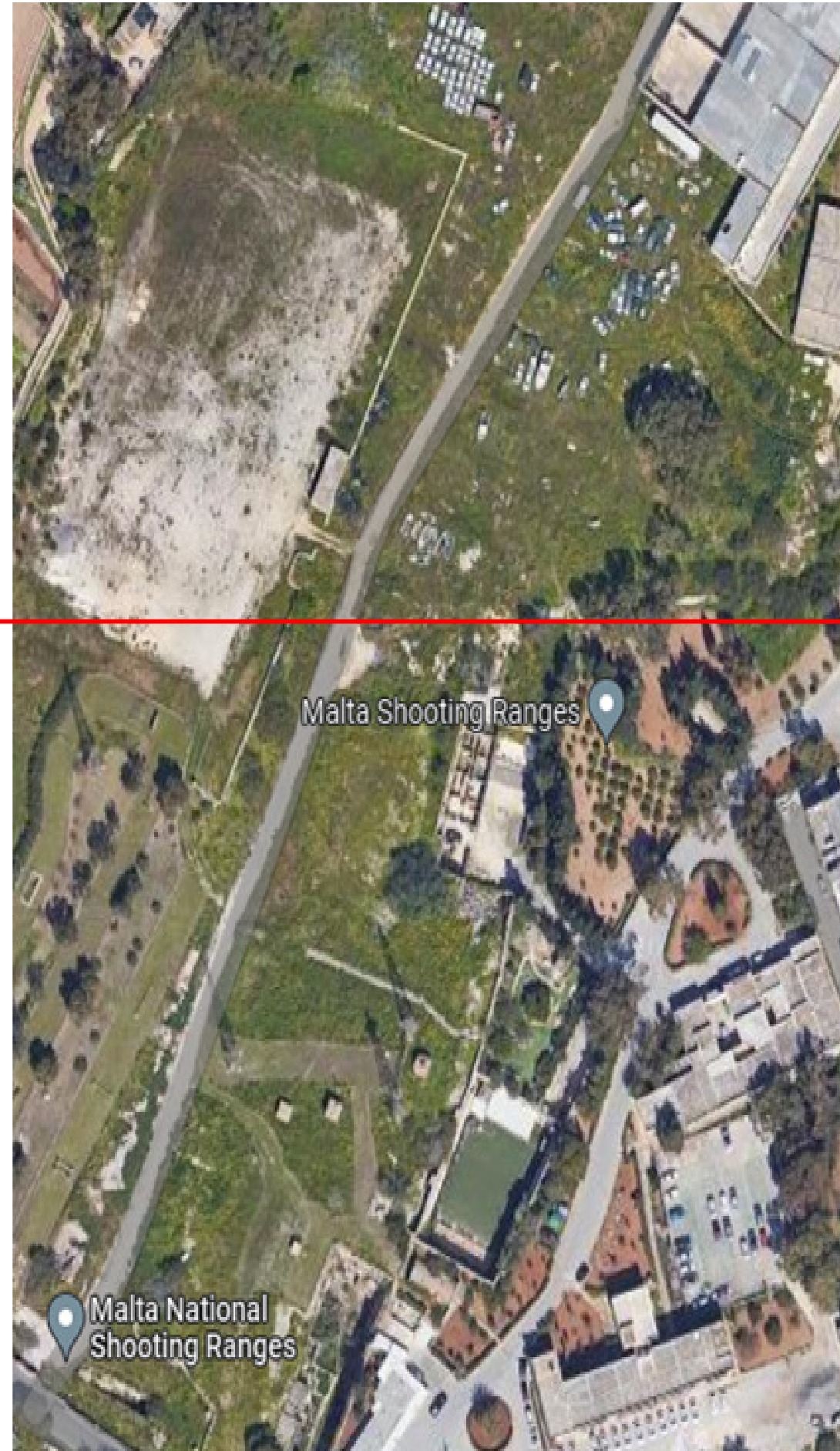
- To lay 2 copper cables to 2 APs on stand and fix IP65 boxes (around 100m and 60m)
- To lay 2 copper cables for APs at lower level around 50m and 70m)
- To lay 2 x BB around 30m
- 5 x 20m Patch leads
- 5 x 10m Patch leads
- 5 x 5m Patch leads
- 5 x 3m Patch leads
- To provide / lay power to switches if not available
- Cable management where required
- To decommission after event

Ta Kandja – Shooting (5)



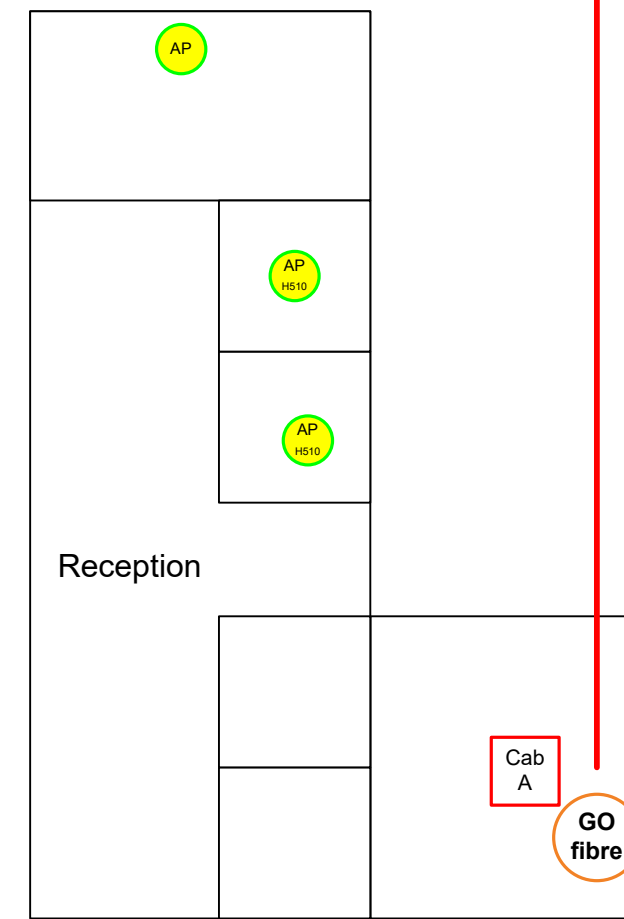
Contractor:

- To lay 2 copper for APs (around 40m)
- 5 x 20m Patch leads
- 5 x 10m Patch leads
- 5 x 5m Patch leads
- 5 x 3m Patch leads
- To lay copper BB From Cab B to Cab C (around 100m)
- To provide / lay power to switches if not available
- Cable management where required
- To decommission after event



BB fibre - GO
BB Copper

Only 1 SM strand
(simplex)



Kirkop – Indoor Shooting (6)

Contractor:

- First floor - to do a coupler and extend copper from soffit AP (ladder height) to media table (around 40m)
- 10 x 20m Patch leads
- 10 x 10m Patch leads for Media table
- 5 x 5m Patch leads
- Optional: 1 small cabinet on lease for hall, unless we can place the switch somewhere secure
- To provide / lay power to switches if not available
- Cable management where required
- To re-install / connect AP after event



GO contact Conrad

— BB fibre - GO
— BB Copper

Ta Qali – Basketball (6)

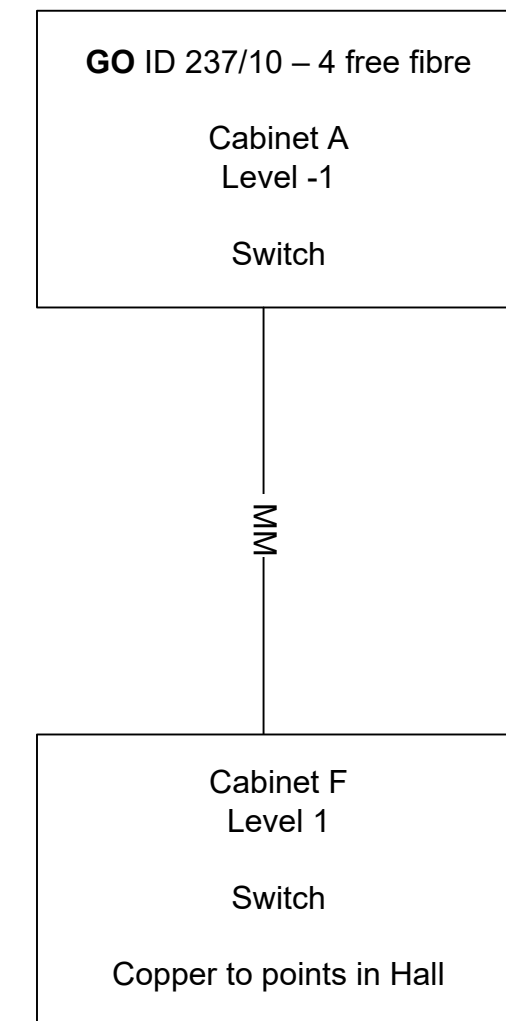
— BB fibre - GO
— BB Copper

Contractor:

- To lay 2 copper cables to 2 APs to seating area (around 2 x 50m) to pass from roof structure
- To test copper from Cab A to Media Desk
- To lay 1 copper cable to 3 x 3 area (around 90m) for AP
- 5 x 10m Patch leads
- 5 x 5m Patch leads
- 5 x 3m Patch leads
- To provide / lay power to switches if not available
- Cable management where required
- To decommission after event



Pembroke – Judo (8)



Contractor:

- Option1: 2 x APs for hall. To use current passive, do 2 couplers to extend GSSE APs (at ladder height) extend by 20m.
- Option2: lay 2 x 50m cables for APs from media to hall.
- 5 x 20m Patch leads
- 10 x 10m Patch leads
- 5 x 5m Patch leads
- 5 x 3m Patch leads
- To provide / lay power to switches if not available
- Cable management where required
- To re-install / connect the two APs after event
- Decommission after event

Kordin – Rugby (9) & (10)



Cottonera (12)

Contractor

- To test MM fibre from Rm 122 to Rm 322
- To Lay cable for 2 x APs to hall (around 40m) from Cab B
- To test and terminate BB cable to Cab C
- 5 x 20m Patch leads
- 10 x 10m Patch leads
- 10 x 5m Patch leads
- To decommission after event

